

[Video recording link](#)

# MODULE 7 L02

# Functions of Respiratory Epithelia

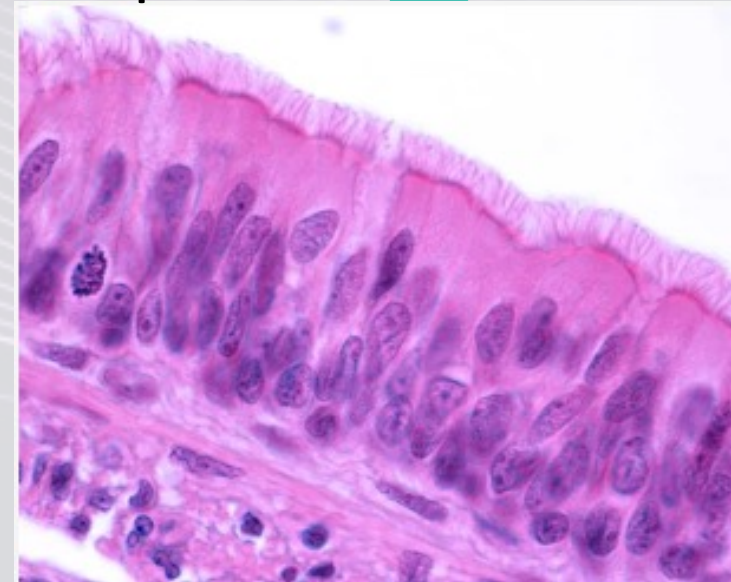
Dr. Lisa Brinn

[lbrinn@fiu.edu](mailto:lbrinn@fiu.edu)



# 2. Respiratory Epithelium

- Pseudostratified ciliated columnar epithelium
  - ❖ All of respiratory tract
    - Except:
      - Inferior portions of pharynx
        - Nonkeratinized stratified squamous epithelium
      - Alveoli
        - Simple squamous epithelium



# Mucous Escalator

- Besides ciliated columnar epithelial cells
  - ❖ Basal progenitor cells
  - ❖ Club cells
  - ❖ Tuft cells
  - ❖ Ionocytes
  - ❖ Neuroendocrine cells
  - ❖ Goblet cells

